



Produced by the
Cheney Historic Preservation Commission
112 Anderson Road
Cheney, Washington 99004

Visit us on the web at: www.cityofcheney.org

*The Historic Preservation Commission would like to acknowledge
the generous support of the following organizations & individuals:*

*Eastern Washington University
John F. Kennedy Library Archives & Special Collections*

*Cheney Historical Museum
and the ladies of the Cheney Tilicum Club*

*Stephen Emerson, author of the
Central Cheney
National Register Historic District Nomination*

This brochure has been financed in part with Federal funds from the National Park Service, Department of the Interior administered by the Washington State Department of Community, Trade, and Economic Development (DCTED) Office of Archaeology and Historic Preservation (OAHP) and the City of Cheney. However, the contents and opinions do not necessarily reflect the views or policies of the Department of the Interior, DCTED, or OAHP.

This program received Federal funds from the National Park Service. Regulations of the U.S. Department of Interior strictly prohibit unlawful discrimination in departmental Federally Assisted Programs on the basis of race, color, national origin, age, or handicap. Any person who believes he or she has been discriminated against in any program, activity, or facility operated by a recipient of Federal assistance should write to: Office of Equal Opportunity, U.S. Department of the Interior, National Park Service, 1849 C Street NW, Washington, DC 20240.

The Cheney Historic Preservation Commission presents

A Guide to the Central Cheney Historic District



View of First Street, taken from F Street and looking northwest, circa 1905. Photo courtesy Cheney Historical Museum.

Introduction:

The Central Cheney Historic District, listed on both the Washington Heritage Register and the National Register of Historic Places, was established in 2001. The District is located between the campus of Eastern Washington University to the northwest, and the former Northern Pacific railroad tracks to the southeast. This is where the initial town grew up, geographically located between the two forces that largely defined the early development of Cheney.

The Central Cheney Historic District is unusual in that it consists of a wide variety of property types, including residential, educational, religious, commercial, and industrial properties. The predominant style of the commercial properties is vernacular brick commercial. Most of the residential properties are representative of eclectic American vernacular architecture, with elements borrowed from the Victorian and Arts and Crafts styles. Some more distinctive architectural styles are represented in the district, including Mission, Collegiate Gothic, Art Deco, International, and Romanesque.

A defining characteristic of the district is the wide range of economic levels represented by the various properties. This is indicative of the way that Cheney developed. Most businesses located along the major First Street axis, with cobblers and candy stores sharing the street with bankers and doctors. Likewise, in the residential areas to the northwest of the commercial center, the houses belonged to those from all walks of life. No enclave for the wealthy ever developed, and neither were the homes of the working class relegated to the fringes of town. Simple front-gabled cottages were built within sight of two-story houses with Victorian porches. The nearby presence of the college, built on the hill overlooking the downtown, also added to the egalitarian nature of the district. Off-campus housing for the students, as well as for the teachers, had to be modest enough to be affordable.

By 1950, the nature of the district had changed. Much of the regional economic wealth had shifted to other areas. Fewer of the town's influential people lived in large houses in the center of town. The economy had begun to shift, placing more emphasis on the college and its rapidly-

The Certified Local Government Program

The National Historic Preservation Act established a nationwide program of financial and technical assistance to preserve historic properties – buildings, structures, sites, neighborhoods, and other places of importance in the historical and cultural life of the nation. A local government can participate directly in this program when the State Historic Preservation Officer certifies that the local government has established its own historic preservation commission and a program meeting Federal and State standards. A local government that receives such certification is known as a “Certified Local Government” or “CLG.”

As a CLG, the City of Cheney has agreed to:

- Survey local historic properties
- Enforce state or local preservation laws
- Provide for public participation
- Other functions delegated or required by the state, such as the enactment of historic preservation ordinances or zoning restrictions

Cheney has maintained CLG status and an active historic preservation program since 1988. For more information on the Certified Local Government Program, contact:

Washington State
Office of Archaeology & Historic Preservation
1063 S. Capitol Way, Suite 106
PO Box 48343
Olympia, WA 98504-8384

Phone: (360) 586-3065

www.oahp.wa.gov

The National Register of Historic Places

The National Register of Historic Places is the official list of the Nation's cultural resources worthy of preservation. Authorized under the National Historic Preservation Act of 1966, the National Register is part of a national program to coordinate and support public and private efforts to identify, evaluate, and protect our historic and archeological resources. The National Register is administered by the National Park Service under the Secretary of the Interior. Properties listed in the National Register include districts, sites, buildings, structures and objects that are significant in American history, architecture, archeology, engineering, and culture. These resources contribute to an understanding of the historical and cultural foundations of the Nation.

The National Register includes:

- all historic areas in the National Park System;
- National Historic Landmarks which have been designated by the Secretary of the Interior for their significance to all Americans; and
- properties significant to the nation, state, or community which have been nominated by the states, federal agencies and others and have been approved by the National Park Service.

For more information about the National Register, contact:

National Park Service
U.S. Department of the Interior
PO Box 37127
Washington, D.C. 20013-7127

www.cr.nps.gov/places.htm

growing population of students than on farmers and railroad visitors. During the subsequent years, many houses were modified for the lucrative practice of rental to students. Many homes in the district suffered due to the increase of long-distance ownership and the tendency to use only expedient methods to protect and extend the life of the structure. Additionally, older homes were often demolished to make room for the more valuable multiple-unit apartments.

The business center of Cheney witnessed decay as Spokane grew as a regional commercial hub and students failed to patronize many of the local enterprises. Larger stores and gas stations were located outside of the old commercial center, drawing traffic away from the sidewalks of the downtown. Another major factor in this decline was, of course, the reduction of passenger traffic on the railroads, which reduced the need for hotels and restaurants. And in the late 1960s, construction of Interstate 90 caused most automobile traffic to bypass Cheney entirely, dealing another blow to the vitality of the downtown.

Now, Cheney is again experiencing a revitalization in the downtown, and many of the historic buildings are being restored. We invite you to explore the history of Cheney as told in her buildings. The Central Cheney Historic District is roughly bordered by Fifth Street on the northwest, "C" Street on the northeast, Front Street on the southeast, and "F" street on the southwest.



*May Day Parade along First Street, circa 1925.
Photo courtesy Cheney Historical Museum.*

(1) 325-327 First Street – Independent Order of Odd Fellows Building (1904)

This two-story brick commercial structure was built by the Cheney Lodge No. 21 of the Independent Order of Odd Fellows, a nationally prominent fraternal organization. Beginning in the early 1880s and for many years afterward, the Cheney Odd Fellows could claim as members many of the wealthiest and most influential men in the community. The interior floor plan is still divided as originally designed, with commercial storefront space below and a meeting hall above. Not only did the Odd Fellows conduct their meetings on the upper level, but it was rented out for other functions and was one of the busiest gathering places in Cheney.

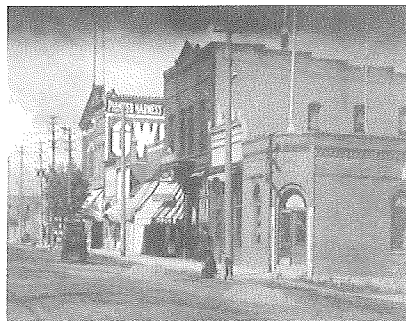
This is one of only four surviving two-story brick commercial buildings in Cheney. The location had been occupied by a blacksmith shop in the 1880s, but had been vacant for over a decade when the Odd Fellows began construction in 1904. Upon completion, the lower commercial space was rented to H.H. Schultz and Sons, Clothiers. Some of the occupants include E.E. Garberg's General Store (note the faded "Garberg's" on the northeast side of the building), C.A. "Abe" Batoroff's Hardware, Roy S. Hanson's Hardware, and Safeway. One later tenant was a Sears Outlet store. In 1966, Walter A. "Shorty" Goodwin opened a barber shop. One of Cheney's longest-running businesses, the barber shop remained open until Mr. Goodwin's death on May 26, 2000, and has since been taken over by a long-time friend of Shorty.

The Odd Fellows Building was listed on the National Register of Historic Places in 1990.

(2) 401 First Street (ca. 1897)

Historic photographs of this building indicate that it once featured a cutaway corner entry with a round brick arch, enclosing a starburst glass transom light, and double wood and glass entry doors. Note the foundation of basalt rock. The secondary (south west) side is largely intact, featuring a brick wall with two round-arched window

economic impetus for a developing community, it led to the financing and establishment of a college of education here. It can be said that the railroad and the college, which developed into Eastern Washington University, as well as the local grain-growing economy, were the pillars upon which the growth of Cheney was founded.



*1st & F Street, looking Northwest.
Photo courtesy Cheney Historical
Museum.*

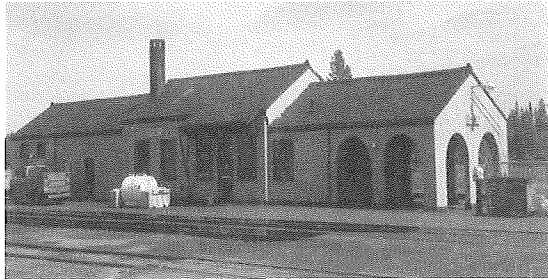
varied interests, Sam was an avid gardener. There was always a profusion of flowers in his yard and offices.

Besides being an astute business man, Sam tried his hand at politics. He served in the Washington state legislature as Republican congressman from the 4th District, and was a popular Spokane County Commissioner from 1930-1936. In the years after retirement, Sam was seen daily on First Street. His quick wit, friendly banter, and hearty handshake made him unofficial greeter to townspeople and visitors alike.

In 1956, Flora's rapidly failing health necessitated placing her in the Cheney Nursing Home which was located in the same converted depot that had housed the offices of Sam's stage line. Although by this time Sam was nearly blind, he was a daily visitor at her bedside. Flora died in 1958. Sam passed away several months later in 1959 at the age of 83, having served his community for 76 years.

60 506 Front Street – Northern Pacific Railroad Depot (1929)

This Mission Revival Style railroad depot was built for Northern Pacific on the site of a wooden depot from 1890. An 1885 city directory lists Percival & Andrus, Real Estate, Loans and Railroad Land Agents, as tenants of the original building. Harry Bonner, agent for the Northern Pacific, resided in the building as caretaker, as did Harry Steward, a railroad telegraph operator.



The new structure contained three main areas: an express and baggage room, a ticket office, and a waiting room. Original fenestration includes several wood doors with multiple-pane windows and transom lights, and a number of wood sash multiple-pane casement windows.

The railroad is of profound importance to the history of Cheney. Not only did the first arrival of the Northern Pacific Railroad in 1881 provide the

openings, but the interior has been extensively remodeled. This small brick building was constructed as a bank. (The reinforced section of the floor which supported a large vault is still visible.) By 1905 it had been converted into the local post office, which remained there for several years. By 1916 the post office had been moved and the building housed a boots, saddle, and cobbler shop. In the 1930s it was occupied by the Penny Packer, a popular candy store.

(3) 404 First Street – Hubbard-Hansen Building (1912)

This building was constructed at a popular corner location previously occupied by wood frame structure which housed several businesses, including a saloon, a general store, and a grocery. As early as 1885 this prime corner location was occupied by the Ostroski, Breslauer & Co. General Store, while the upper floor housed the Northwest Tribune, a 6-page newspaper published by George F. Schorr. This varied commercial use continued in the new brick structure, housing a general merchandise store and a hardware/grocery store in 1916. The Cheney Tailoring Company once occupied part of this space. For many years, into the 1970s, it housed the Fonk's Department Store. After this, it was the location of the Book and Brush, the relocated rendition of the former Cheney News Stand.

The interior retains its original ceiling of decorative pressed tin square panels and an old hand-cranked freight elevator. The brick wall of the front facade features several intact elements, including the brick segmentally-arched door openings and several square casement windows with brick segmental arches and brick sills.

(4) 405 First Street – Bill's Tavern (1902)

This building was built in 1902 on the site of a previous wood frame structure that housed a general merchandise store. The new building combined two business areas in an L-shaped configuration. The forward section was originally used as a bank. The rear section was occupied by a plumbing and hardware business. By 1916, the two sections had been consolidated into a billiard hall which also offered tobacco, soft drinks, and the services of a barber. The serving of soft drinks indicate that this

type of business, usually referred to as a saloon and serving alcohol, was operating during a dry period (Washington went dry in 1914, more than five years before the national imposition of prohibition in 1920). By 1939, prohibition had been repealed, but the saloon had ceased operating during the interim and the building was in use as a storefront.

In 1940, it was purchased by Bill Lee, who opened a tavern. It has remained in business as Bill's Tavern ever since. Ownership has remained in the family through the current owner, Dick Lee, the grandson of Bill Lee. The interior furnishings and decor are largely representative of historic saloons, but much of it has been replaced or altered over the years.

(5) 406-408-410 First Street (1912)

This one-story brick commercial building was originally designed to house three separate businesses, a configuration it still retains. The upper portion of the storefront façade remains intact. In 1916, three enterprises were located in this building: a confectionery, with a candy factory in the back, a jewelry shop, and a clothes cleaning business.

(6) 407-409-411 First Street – Pomeroy Building, Moose Hall (1890)

This is one of only four two-story brick commercial buildings remaining in Cheney. The interior of the southwest storefront retains a remarkable high ceiling clad with square pressed tin panels that display a geometric design.

The Pomeroy Building was financed by Dr. Francis A. Pomeroy, a surgeon who also became a prominent businessman in Cheney.

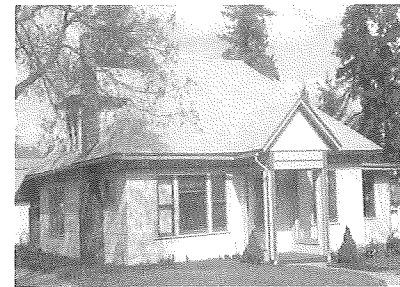
Dr. Pomeroy came to Washington and located in Cheney in 1884, immediately initiating his practice. In 1893-94 he went to London for further postgraduate work in medicine and surgery. Returning to Cheney, he renewed his practice and established a drug store. Dr. Pomeroy was also



*The Pomeroy Building, built in 1890.
Photo courtesy of Cheney Planning
Department.*

(58) 318 “F” Street – F.M. Martin House (1903)

The (first) F.M. Martin House is significant as a fine, intact example of an upscale vernacular residence employing modest Queen Anne design elements (similar to the neighboring Lowe House). Like the Lowe House, the Martin house has a wraparound front porch, though less ornate. The gable faces are distinguished by pentroofs and stained-glass casement windows. It is also significant as the home of F.M. Martin Family of the Martin Grain & Milling Company, and his son Clarence, who rose to prominence as governor of Washington State during the 1930s.



(59) 319 “F” Street (ca. 1910)

This one-story wood frame house was built between 1908 and 1916, and was owned by Cheney pioneers Sam & Flora Webb. Sam was born in Pony, Montana in 1876. His father, a successful mining man in Alder Gulch, Montana, moved on to Illinois where he farmed for a few years. In 1882

Webster Webb purchased a number of purebred Clydesdale horses and came to Cheney, arriving on the first Northern Pacific train to reach town. Here he farmed and bred horses. Sam was raised and educated in Cheney.

In 1895 Sam married Flora Stroup, whose parents were also early pioneers in the Deep Creek area. She was his devoted wife for 63 years. Their only son, Carroll, was born in 1900, and died at the age of 46.

Sam engaged in various business ventures, all of which turned out well. Among them was the first stage (bus) line he started in Cheney in the early 1920s. Sam's ticket office and waiting room were in the Interurban Depot building formerly used as a station by the electric train (corner of Second and College Streets). The stage line did a brisk business in both freight and passenger service. Both rooms were filled with house plants, for among his

an old wood and glass entry door, and a small multiple-pane wood sash casement window. Note the unusual gable designs. This house retains its original plan, except for the hip-roofed rear addition which was built in 1964. A concrete patio and a garage behind the house were built in 1963.

Frederick Reuter was born in the small German community of Avoca, Wisconsin in 1871 to immigrant parents. Until he started school at age 6, Frederick spoke only German. At age 14 he ended his school career and began learning cheese and butter making, and in 1892 he graduated from the University of Wisconsin with a 'life diploma' in dairying.

In 1896 Frederick spent a year as head instructor in the Wisconsin Dairying School in Madison. The following year he taught butter making at the University of Idaho in Moscow. While representing Idaho at a dairying convention in Spokane, Frederick met Frank Martin, who hired him to take charge of the Cheney Creamery owned by Martin and Hubbard. It was one of the largest creameries in the state at that time, processing 35,000 pounds of milk daily.

In 1899 Frederick married Nellie May Webb, daughter of Cheney pioneers Webster and Annetta Web. They had 5 children, all born in Cheney: Ruth, Dorothea, Fred, Gladys and Clarence. In 1903, Fred opened the Cheney Cheese Factory as sole owner and proprietor. The business thrived and became known far and wide for its superior cheese, although failing health forced Frederick to give up the business after just a few years. He then served as Cheney Postmaster during World War I for a total of 8 years, and later worked for the Cheney Police Department. The Reuters were active in community organizations and formed many close friendships, enjoying evenings of whist or pinochle with other local families in their Cheney home.



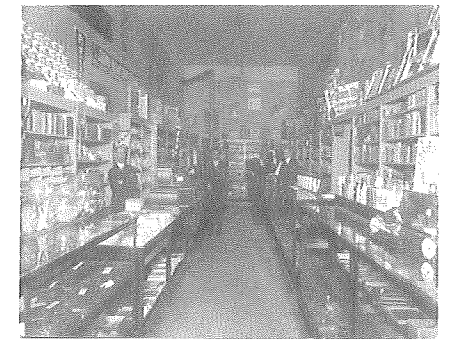
one of the organizers of the Cheney Brick Co. and commissioned the noted architect K. K. Cutter to design a new post office for Cheney in 1918. His medical practice included being the surgeon on call for the Northern Pacific and the SP & S Railways. He also served as mayor of Cheney for two terms and as county physician for three years.

Remarkably, following the destruction of the original Cheney Normal School building in 1891, college classes were held in the Pomeroy Building for two years. In 1908, Pomeroy's drug store was located in the southeast storefront and the grocery/hardware store owned by E.E. Garberg occupied the other storefront. In 1910 he moved his business to the Odd Fellows Building and, by 1916, a restaurant occupied the space where his store had been. The Pomeroy Building was purchased by the Moose Fraternal Lodge in 1929 which subsequently used the upper floor for its activities and leased the two storefronts as commercial space. During the last several decades the upper floor has been used as rental apartments.

(7) 414 First Street (ca. 1900, 1910)

This property is composed of two historic one-story brick commercial buildings that have been consolidated to house one business. The interior of the building to the southwest retains an intact pressed tin ceiling, displaying an elaborate design featuring cartouches and egg and dart. Some interior brick and rock surfaces are also visible, exposed by remodeling.

The original building was probably constructed in about 1900, and was built on a site that had been the location of a confectionery, a meat market, and a millinery shop. A general store was located in this space until about 1916 when a restaurant and bakery moved in. It became part of Showalter's Tavern, a local landmark, in the 1970s.

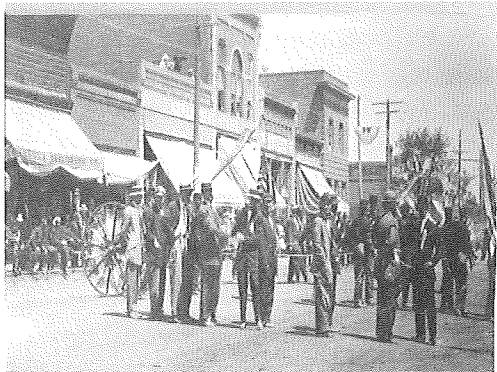


*Interior of Frankie's Drug Store, 1915.
Photo courtesy of Cheney Historical
Museum.*

The building to the southwest was constructed about 1910. In 1916, this space was occupied by a billiard hall that included a cigar and tobacco shop. This building housed several businesses before being incorporated into Showalter's Tavern in the 1980s.

(8) 416 First Street – Griswold Building (1883)

The Griswold Building is reportedly the first brick building in Cheney. The use of brick became common in Cheney and other western towns as a protection against the threat of fire. An historic photograph indicates that the front once featured a tall second-story facade with a cornice composed of an overhanging corona and brick corbeling. By the 1990s, the upper level of the building had deteriorated to the point that it had to be removed. The Griswold Building may have been a saloon storefront in 1884 with a public meeting hall on the upper level. During the late 1890s, the Cheney City Council met in the upper hall until the City Hall building was built in 1890. In 1916 the building was occupied by a drug store. The storefront level became the Cheney Library in the 1960s.



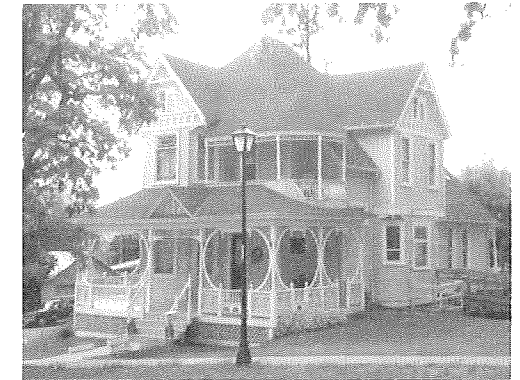
May Day Parade, 1905, in front of the Griswold Building (center of photo). May Day celebrations included parades, the crowning of a queen, and a May Pole ceremony. Note the top of Security National Bank farther down the block. Photo courtesy of Cheney Historical Museum.

(9) 420 First Street (ca. 1890)

The earliest use of this building was as a general merchandise store. It was subsequently occupied by a number of enterprises, including a soft drink and billiard establishment (1905) and a hardware store (1908-1916). It was the location of the Cheney News Stand in the 1960s and 1970s.

in the Lowe House, he was an active member of the Masonic Lodge, he pursued his real estate interests, and cared for the horses he kept in his small carriage barn. He also worked for the humanitarian cause of raising relief funds for victims of the San Francisco earthquake through his active membership in the local commercial club. Bessie Lowe was also socially active and was at one time treasurer of the Cheney Eastern Star. She was a small, frail, genteel lady with a taste for highly ornate styles. She was often seen enjoying her porch swing. The Lowes were childless, but they enjoyed the company of children and young people. They invited several students from the surrounding rural areas to live with them while attending school in Cheney.

David Lowe died in 1935 and was followed in death by Bessie two years later. Her sister, Helen Ware, who had lived with the Lowes in their later years, inherited the house, converting it into a boarding house for young ladies in order to supplement her income. Such multiple use has continued in varying degrees throughout the building's later history. Although this has resulted in numerous modifications of the interior, the house has also seen several attempts to restore original interior features such as the wood work. The exterior has been well-maintained and retains much the same appearance as displayed in early photographs. At present the Lowe House is occupied by the Alpha Phi sorority, continuing its long association with the students of the college.



The Lowe House was listed on the National Register of Historic Places and the Washington Heritage Register in 1983.

(57) 309 "F" Street – Reuter House (1903)

This house was once occupied by the family of Frederick Wilhelm Reuter, owner of a local creamery and cheese factory. The porch of the Reuter house features wrought iron canopy supports, a wood deck, concrete steps,

The historic context of this house is identical to the neighboring brick residence at 216 First Street. Both structures retain excellent architectural integrity of both materials and design.

(55) 303 “F” Street (ca. 1910)

This one-story wood frame house has a rectangular hip-roofed plan, a composition roof and a basalt foundation. Exposed rafters are visible beneath the overhanging eaves. Asbestos panel cladding has been applied over what was probably horizontal wood siding. The southwest and southeast sides of this corner house have retained original wood sash picture windows with the upper sections divided into smaller decorative shapes by lead cane. Most of the other windows are wood sash double-hung.



Real estate records indicate that this house was built in 1903, but the building does not show up on Sanborn maps until 1916, denoting a later construction date. This house has always served as single-family residence. The original plan has largely been maintained and, aside from the application of asbestos siding, this house retains a high degree of architectural integrity.

(56) 306 “F” Street – David Lowe House (1904)

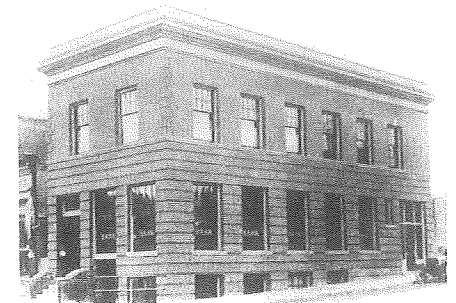
This house, constructed in 1904, is considered one of the best examples of Queen Anne architecture in Washington State. Despite interior alterations undertaken to facilitate its use as a multiple-unit dwelling, this house has retained a high degree of architectural integrity both of appearance and materials. It was originally built as a single-family residence for semi-retired farmer David Lowe and his wife Bessie. The many rooms in the upstairs were used to house servants. Behind the house is a gabled, one and one-half story former carriage house with a composition roof and horizontal wood siding.

David Lowe maintained a 400 acre farm on the outskirts of Cheney, just off the Spokane-Cheney Highway, southwest of Fish Lake. He was a popular and kindly man who enjoyed playing horseshoes and socializing at one of the local blacksmith shops. During his retirement, when he built and lived

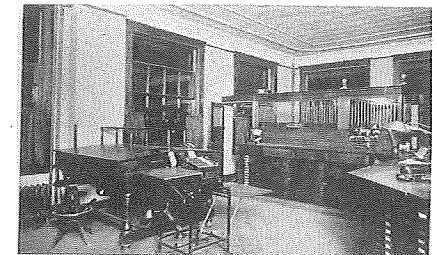
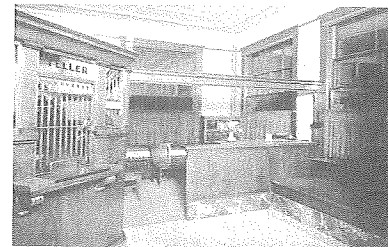
(10) 422 First Street (ca. 1920)

This brick building replaced a wood frame (1916) boots and saddle business. The matching brick striations on this building and the adjacent Security National Bank/Mason’s Hall building indicate that the smaller structure was built to somewhat match the features of the other. During the 1960s and 1970s it was occupied by Mosman’s Clothier’s.

(11) 424 First Street – Security National Bank, Mason’s Hall (1910 and 1924) Built by the Security National Bank, this was designed by the well-known architectural team of Kirtland Cutter and Karl Malmgren. The result was one of the more monumental and impressive structures ever built in Cheney. The sandstone for the cornice and other design details was quarried from a well-known quality source near Tenino, Washington. Local builder Ed Erickson put the plans of Cutter and Malmgren to practice and the bank was completed in early 1911.



This property consists of two similar two-story buildings that were constructed at different times to create an “L” shaped building with a cohesive appearance. The large window at the northeast end is a former entry that



The Souvenir Booklet from the Bank’s 10th Anniversary in 1916 calls attention to “the thoroughly modern nature of our quarters. A Burroughs ledger posting machine enables us to furnish monthly statements with the utmost promptness, this being one of the first country banks in the State to install one of these machines. Loss by fire and burglary is provided against by a modern Manganese safe equipped with time lock.” Photos courtesy of Cheney Historical Museum.

has been converted to a window. The adjacent, newer building, has only one primary face, which looks onto "E" Street, now College Avenue. Although the materials have probably been changed, this storefront retains its original configuration of a central wood and glass door flanked by large display windows. To the left of the store front entry is the door that accesses the interior stairs to the lodge meeting hall. Set into the brick wall above this entry is a block of sandstone with the logo of the Masonic Lodge carved into it.

The main floor of the original building was devoted to the business of the Security National Bank, while the Cheney Light and Power Company and the Cheney Telephone Company occupied the basement level. The upper floor was rented to medical and business professionals. In 1924, the local Masons decided to erect a new building next to the bank that would be joined to the older structure. Although they used less expensive materials, installing a metal cornice instead of a sandstone one, for instance, they took great care to replicate the design elements of the original building to create a cohesive whole.

The Masons used the upper level of the new building for their ceremonies, while the lower space was occupied by the Cheney Free Press. The Bunnell Shoe Shop was also located in the building during the early years. In 1928, the Security National Bank and the National Bank of Cheney merged, and the new institution moved. The local Masonic Lodge continues to meet in the upper portion of the newer building.



Pioneer Saloon in Cheney 1905; Across street from railroad tracks, where all saloons were located by order of town. Note old telephones, cash register and clock. Bar Tender is Henry Prehn. Photo courtesy of Alma Mullinix & Cheney Historical Museum.

In 1928, these houses were acquired by the Rosenzweig family and have been occupied by their descendants ever since. The original footprints of these houses were identical gable and wing plans. The newer portions have been modified over the years, but the original brick portions retain remarkable architectural integrity.

(53) 219 "F" Street (1902)

This was originally the home of Harmon and Love Davis. Harmon was a miller at the Martin Flour Mill, and Love did hemstitching and tailoring for local families. This house was built as an identical twin to its adjacent neighbor at 213 "F" Street. The plan and materials of both these buildings has been altered over the years. Both have had original canted bay windows of the gable front removed, and both have had additions attached to the rear. Additionally, both originally had open front porches, along the side gable, that were enclosed some time after 1939. The garage behind the house was built in 1950.

(54) 220 "F" Street - Rosenzweig House (ca. 1895)

Carl Rosenzweig, Sr., was a local farmer and butcher in the Rock Lake area. When the Great Depression struck in 1929, the Rosenzweigs moved to town and Carl took work as a custodian at the junior high school to support his family. This is a two-story brick house that is nearly identical to its neighbor to the southeast.



Three wood sash double-hung windows are located in the front gable face. These have segmentally-arched hooded drip molds and sills of brick headers. The old wood and glass front entry door also has a segmentally-arched hood. A glass transom light is located over the door. A design feature that differentiates this house from the similar adjacent structure is a distinctive cornice line, just below the eaves, created by alternately indented bricks.

The storefront has been extensively modified but retains the central recessed entry configuration.

This building has seen use by various business enterprises, including a bakery, a pawn shop and, according to some accounts, a moving picture theater. The upper level has been converted to apartments.

(51) 213 “F” Street (1902)

This house was built in 1902 as an identical twin to its adjacent neighbor at 219 “F” Street. The plan and materials of both these buildings have been altered over the years. Both have had original canted bay windows of the gable front removed, and both have had additions attached to the rear. Additionally, both originally had open front porches, along the side gable, that were enclosed some time after 1939. This house has seen a number of different wall cladding materials, including horizontal wood siding, stucco, asbestos panel, and the current wood panel siding. The doors and most windows have been replaced, most notably the multiple-pane wood sash casement windows of the side gable have been replaced by the current large picture windows. The garage in the back was built in 1922 and is mostly intact.

(52) 216 “F” Street – Rosenzweig House (ca. 1895)

The old wood and glass front entry door has a segmentally-arched hood. A transom space above the door has been filled. Above the porch, on the side gable is a small gabled wall dormer with a double-hung window that penetrates the roof eave. A similar wall dormer and window is visible on the southwest wall, as are two segmentally-arched double-hung windows.

The story of this house is intertwined with its neighbor to the northwest. The original builder is unknown, but both were obviously designed by the same person. Real estate records indicate that these houses were built in 1886, while family records indicate construction may have begun as early as 1881. They do not appear on Sanborn Maps, however, until 1897. Nevertheless, these buildings were among the earliest brick houses to be built in Cheney. The brick was reportedly fired at the local plant that once operated on part of the grounds of Eastern Washington University. These vernacular style houses are excellent examples of early brick making and design employing common, or red, brick. The bricks were known locally as ‘Cheney adobe bricks.’

(12) 502 First Street (ca. 1890)

This building is part of a surviving block of three brick commercial structures that have been at this location since about 1891 (502/ 504/ 506 1st Street). The upper portion of the front storefront façade and the side of the building facing College Street remain fairly intact, with a simple flat brick parapet, a corbeled brick cornice line, and decorative rectangular panels of recessed brick. This corner site was previously the location of a two-story Masons’ Lodge meeting hall. The current building has seen many commercial uses over the years, including a saloon, billiards hall, and boots/saddle shop. In 1885, George W. and William H. Rich operated the Rich Brothers Saloon here. In 1939 it was a restaurant.

(13) 504 First Street (ca. 1890)

Like its neighbors on either side, this building is part of a surviving block of three brick commercial structures that have been at this location since about 1891 (502/ 504/ 506 1st Street). During its early years, this storefront successively housed several businesses, including a general merchandise store, a drug and stationery store, a grocery and fruit store, and a moving picture theater. In 1885, druggist Elijah B. Hendricks did business at this location. In 1939, it was being used as a bus and truck staging business.

(14) 506 First Street (ca. 1891)

This building is part of a surviving block of three brick commercial structures that have been at this location since about 1891 (502/ 504/ 506 1st Street). For most of its history it has been divided into two separate storefront units. By 1885, George W. Eastman’s barber shop was located here. It has served a number of different enterprises including a jewelry store, a hand printing press, an electric printing press, and an ice cream manufacturing company.

(15) 513 First Street – Old Cheney Post Office (ca. 1929)

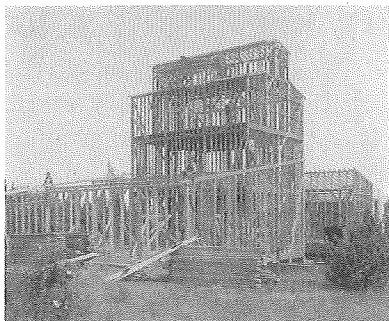
Although this building was not constructed until about 1929, it appears to have been built on a stone foundation that existed as early as 1891. Between 1897 and 1908 it was listed on a Sanborn map as simply “abandoned stone basement.” Apparently this building project was never completed. The original brick cladding of the front façade is visible above and to either side

of the storefront, although the storefront has been extensively altered with new windows, doors and siding. The building does have a full dirt basement and a stone foundation. This building housed the Cheney Post Office until the late 1950s

(16) 601 First Street – Martin Mill (1938)

F.M. Martin began his grain milling operation in 1907. This small but fashionable building was constructed in 1938 as the office of the F.M. Martin Grain and Milling Company. Martin became one of Cheney's wealthiest and most well-known citizens through his activities in real estate, banking, and agriculture, and his son, Clarence, was a notable supporter of the local college. Clarence would later be elected governor of the State of Washington, and the first governor from Eastern Washington.

The Martin Milling Company not only developed the capacity to store large amounts of grain but also to mill it into flour at the same location. The nearby Northern Pacific Railroad tracks facilitated this operation. One reason for Martin's success was his courting of federal government agencies, such as the United States Food Administration, as well as state institutions. In 1914, the company was awarded contracts to supply grain to "eight state institutions, the eastern and western hospitals for insane, the institution for feeble-minded, penitentiary, reformatory and training school, soldiers' and veterans' home."



Construction of the first Martin Mill, 1913. The wood structure burned several years later. Photo courtesy of Cheney Historical Museum.

The Martin family operated the business until 1943, when the buildings and equipment were sold to the National Biscuit Company, better known as Nabisco. The interior of the office retains original plaster walls and a large walk-in vault with the words "National Biscuit Company" printed on the door. An interior office once used by F.M. Martin retains its original brick fireplace and wood mantel, although the chimney has been removed.

(49) 320 College ("E") Street (1902)

The unusual plan features a central hip-roofed section with two gabled extensions. The original wood horizontal siding has been covered with aluminum horizontal siding that replicated the historic appearance. The most striking feature of this residence is the central tower, above the front entry, with its steeply-pitched four-sided pyramidal turret.



The entry itself features a multiple-pane wood and glass door as well as multiple-pane side lights. Above the low brick porch of the entry is a canopy, with a broken bed pediment, supported by square wood posts. Windows of the house are mostly wood sash double-hung with multiple-pane upper sections. To the rear, a hip-roofed enclosed back porch is attached to the house.

This house, which features a rather elaborate plan, was probably built for a well-to-do single family. At some time it has been associated with Mr. Holter, of the local Brown and Holter automobile dealership. Although new materials have been applied to the roof and walls, the building retains much of its historic style and appearance. The design works well, but is actually the result of several alterations. The house originally had a wraparound front porch, which was removed prior to 1939 and replaced by a small enclosed front porch. The impressive turret and entry pediment were constructed at a later date.

(50) 113 "F" Street (1925)

The combination of concrete and wood frame construction here is rare in Cheney, as is the application of Art Deco design elements. A mild Art Deco effect is achieved in the full-height pilasters and central triangular parapet of the front facade, the vertical concrete wall buttresses of the sides, as well as the diamond-shaped appliques below the plain cornice of the front parapet.

(47) 302 College ("E") Street – Dr. Johnson House (1915)

This large bungalow was built in 1915 in a design typical of Arts and Crafts style with elements such as a steeply pitched roof, wide eaves with exposed rafter ends and beams, and the wide front porch. The small front dormer to the right is a former sleeping porch/balcony that has been filled in. The roof over the front porch is supported by battered square wood posts which rest upon massive basalt piers. The central front door is flanked on either side by large wood sash window panels.

This house retains much of its original historic appearance and materials except for the attached modern dental office. However, the office is associated with Dr. Oscar Johnson, a dentist who was perhaps the house's longest occupant and practiced out of the office for a time. The office building itself was constructed in 1959 and elongated by an extension in 1973.



(48) 317 College ("E") Street (1940)

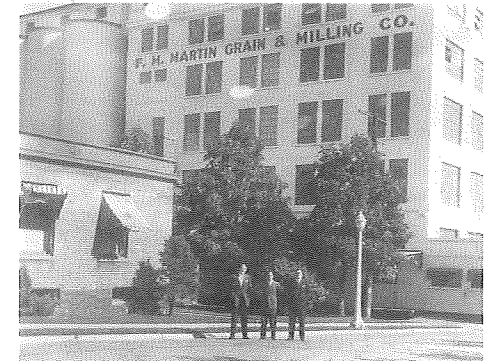
This building has a surprisingly modern appearance despite its early construction date of 1940. It displays elements of the International Style, including flat roof, rounded exterior corners, and horizontal rows of metal sash windows. Although not a particularly beautiful structure, it retains excellent architectural integrity and is one of few buildings in Cheney that reflect this architectural style. Its size indicates that it was probably always a multiple-unit rental, one of the earliest built in Cheney. It was remodeled in 1969 for use as fraternal organization housing, when common dining facilities were created and other room configuration changes made. A more recent remodel gave the building classical stylistic elements that emphasize its use as a residence for a fraternal organization, including round columns and pedimented window lintels. This treatment diminishes the International Style appearance of the building, but reinforces the association with its current and longtime function.

The small, square brick structure located behind this office building once contained the electrical works for the mill.

(17) Behind 601 First Street – Martin Mill

(1918-1997) This is a large complex composed of older and newer buildings. On two sides of the tower, facing northwest and southeast, are molded concrete shields enclosing the capital letter "M" for "Martin." The buildings of this complex contain milling equipment and flour moving equipment such as augers and bucket elevators.

Cheney had several grain storage and milling facilities during its early days and served as a regional center for concentrating supplies of harvested grain and processing flour. Such activity was a mainstay of the town's economy.



The three sons of Clarence Martin in front of the mill: Bill, Frank & Dan. Photo courtesy of Cheney Historical Museum.

As early as 1888, the Cheney Flouring Mills and the Northern Pacific Elevator Company operated large wood frame plants along the railroad tracks. Both of these facilities were gone by 1905. In that year F.M. Martin owned a hay and grain warehouse in a large wood frame building beside the railroad tracks. Mr. Martin began his grain milling business in 1907 on this site.

This enterprise not only developed the capacity to store large amounts of grain, but also to mill it into flour at the same location. The nearby Northern Pacific Railroad tracks facilitated this operation. Harvested grain could be brought to the storage elevators by train, milled into flour, and then shipped to clients. At some point, the storage areas and the mill were expanded and a three-story grain elevator (wood crib construction) was added, which subsequently burned in the mid-1910s. Undeterred, Martin rebuilt on the

same site, this time with fireproof reinforced concrete. The current flour mill and the bank of grain elevators to the northeast were completed in 1918. Additional and larger concrete elevators were added in 1922 and 1923. Subsequent concrete structures were added to the plant between 1933 and 1954.

(18) 705 First Street – Cheney Electric Light Works/Leifer Apartments (1890)

The Cheney Electric Light Works was the first of its kind to be located in town and was a sign of prosperity. The machinery for producing electricity was in the basement in a semi-subterranean stone structure, with a fifty-foot smoke stack behind it. Power was created by burning fuel, perhaps coal or oil, and using the steam produced to turn two “incandescent dynamos.”

The lower level of the main building was designed for use as storage or commercial space. The upper level seems to have always been used as a multiple-unit residential rental. In 1897 the upper floor was occupied by “tenements,” while the lower commercial spaces were used for storage and a carpenter shop. This continued at least until 1908. By 1916, the electrical works had moved and the commercial spaces were



occupied by an undertaker and a picture framing business. In 1939 a soda bottling company and the local telephone company used the space. The building was used for a laundry in the 1940s, and in the 1950s it was converted into apartments, for which it is still used today. It is now known the Leifer Apartments.

The sides and rear exterior walls of the building are clad with common red brick, while the front façade is clad with brick that is covered with a stucco veneer. Lines carved into the stucco create the appearance of concrete or masonry blocks.

45 (46) 220 College Avenue (“E” Street) (ca. 1897)

This house was originally built as a single-family residence. Its size and appearance indicate that it was built for well-to-do owners. When first constructed it consisted of the basic central square section with wings and an enclosed back porch. The wraparound front porch was added in about 1905. Other additions were made to the rear elevations in about 1916.



Most likely the front door was moved, sometime prior to 1959, from the original corner location under the pediment to an adjacent location that was formerly occupied by a window. Despite alterations, this house retains the striking historic appearance of its primary facades as viewed from the north. It is currently occupied by a student fraternal organization.

46 (47) 221 College Avenue (“E” Street) (1904)

This one-story wood frame house has a simple front-gabled rectangular plan with a cutaway porch at the west corner. Original wood sash double-hung windows have been retained although covered with storm windows. An iron coal chute door is still visible on the northwest side.

Sanborn Maps do not show this house until 1939, indicating the house was either moved from another location or was built later. Whatever the case, the basic plan has not been altered since 1939 and the original appearance remained intact until at least 1960 when siding was added, which has significantly altered the appearance. This modest house was probably originally built as a single-family dwelling. The owners in the 1930’s, the Leedlofts, also owned the Sweets & Eats Confectionery and Restaurant located downtown.

This property consists of a two-story building (1890), and a one-story building that was attached to the front and side of the earlier structure in 1955. The lower level is obscured by the new construction and an addition to the adjacent Cheney Interurban Depot. The interior of the older structure has been extensively modified for reuse as storage space and, on the upper level, apartments. The longest tenant of the newly refurbished structure was the Inland Empire Telephone Company.

43 (44) 114 College Avenue ("E" Street) (ca. 1931)

This building is a one-story brick commercial structure that seems to have originally been designed as two separate units, one deeper than the other. It is conceivable that they were built at different times. The two primary storefront sections are divided by a brick pilaster. The storefront facades have been compromised by installing newer doors and display windows. The recessed entry on one storefront has been retained, however. This structure has been occupied by a number of storefront business enterprises over the years. The current owner, American Legion Post No. 72, has been in the building for several decades.

44 (45) 215-217 College Avenue ("E" Street) (ca. 1910)

The eastern portion of this house was built between 1908 and 1916 and was first used as a photography studio. A. A. Ames was a well-known local photographer, and the Cheney Historical Museum contains much of his documentation of the fires that struck the Normal School. By 1939 the other section had been attached to create a duplex. The addition was probably made to take advantage of the opportunities for rental to college students, which is still the primary function of the building.



Interior of the A. A. Ames Photography Studio on Normal Avenue, now College Avenue. Photo courtesy of Cheney Historical Museum.

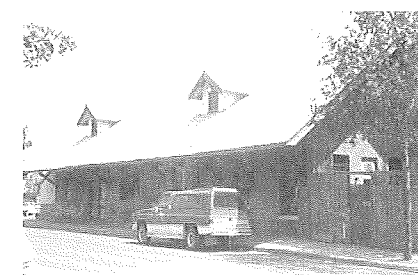
(19) 421 Second Street (ca. 1908)

This corner property began as two adjacent, one-story brick commercial buildings, originally facing onto "E" Street, that have been consolidated to house one business. In 1916 the northwest building was occupied by the Cheney Post Office (first opened in 1908) and the southeast building was a moving picture theater. A newspaper article indicated that the new postal facility was "modern and the service will now meet the demands of the rapidly growing community."

The two buildings housed separate businesses for many years and may have been consolidated during the 1960s, when Savage House Pizza occupied the site. Fire damaged that enterprise in the 1970s and the interior was remodeled. It was unused for several years before being recently reopened as a movie theater, a use that has historic precedent.

(20) 505 Second Street – Cheney Interurban Depot (1907)

This building was constructed as a branch of Washington Water Power's interurban electric railroad system. In an era when automobiles and paved roads were essentially nonexistent, transportation was limited to horse and buggy. Travel was slow and dusty. Overnight stays away from home had to be planned and freight loads were limited to the size of a buckboard. Of course railroads helped ease long distance transportation problems but they represented a huge expense and were seldom used for short distance travel. By the 1880s, electric trains or trolleys began to replace the old horse-drawn trolleys within the city of Spokane. Finally, in 1903, a complex system of interurban electric trains was begun which eventually covered over 250 miles and connected many outlying communities with Spokane at its hub.



Carrying both passenger and freight traffic, the railway provided a significant economic boost to the developing community. The original depot building contained office space, a freight room, and a waiting room, and was surrounded on three sides by wood loading docks and platforms. It included a fruit storage basement for perishable freight.

The interurban service was efficient, safe and pleasant. Closed cars and heated seats kept passengers comfortable even in the worst weather. Small, three-sided wooden shelters stood every mile or two along the route, giving passengers a place to sit out of the weather while they waited for the trains to come. Train excursions to outlying resort areas became a popular holiday pastime. In 1905, when WWP built one of the first electric railroad lines between Spokane and Medical Lake, eager Spokane tourists were lured to the lake for swimming, boating, dancing, and medicinal mud baths which formed the basis of Medical Lake's economy. And of course, it encouraged people to come to Cheney, particularly commuting Cheney Normal students.

In 1922, the interurban line system was abandoned, largely as a result of the rising dominance of the automobile. Subsequently, the depot served as a passenger bus, or "auto stage," station until at least 1939. For over twenty years, during the 1960s and 1970s, the building was the site of a nursing home for the elderly. The depot was then followed by a series of restaurants, the present one being Fiesta Charra Restaurant.

The Cheney Interurban Depot was listed on the National Register of Historic Places and the Washington Heritage Register in 1979.

(21) 518 Second Street (1897)

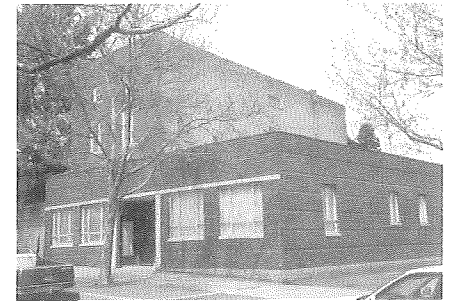
This building has a central entry porch with two doors. Most of the wood sash windows, including double-hung, casement, and picture, are intact but are covered with metal storm windows. On the southwest elevation there is a secondary entry, with an old wood and glass door with multiple-pane side lights and a small gabled canopy.

This was originally built as a one-story single-dwelling residence. Since then, additional sections have been added to create the present two-story structure. Because of its size and multiple entrances, it is likely that it was expanded for use as a multiple-unit residence, perhaps for college staff or students. The first major addition was built in about 1916, when the southeast portion of the house was constructed. By the 1930's, the current owners, the Clevenaughs, were renting out upstairs rooms. Other less significant additions have been made since 1939.

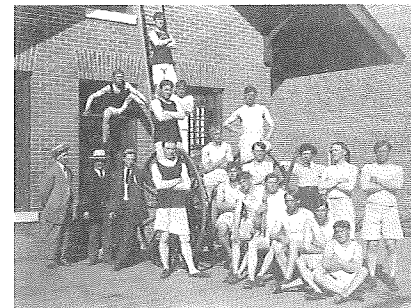
front porch is another common feature. This modest house has been rented to students of the nearby college for many years. It was likely originally constructed for this purpose.

(42) 111-115 College ("E") Street – Old City Hall (1890, 1955)

After the previous city hall building burned in 1883, the city council met for several years in the upper level of the Griswold Building. This 1890 building was designed to house the City Council chambers and municipal offices on the upper floor and the Cheney Fire Department, and its hose cart, on the lower level. By 1897 a separate one-story jail, inside a fenced compound, had been built behind the building, as well as a fire bell tower. A few years later this jail was removed and a new brick jail was built onto the back of the city hall building. The fire bell tower was moved to the corner rooftop of the original structure. The Cheney Fire Department had acquired new equipment by 1916, including another hose cart and a chemical truck "on wheels" which was probably pulled by either horses or firemen.



By 1939, a small office and a barbershop had been built to either side of the front facade of the City Hall. The Cheney Fire Department then possessed motorized hose, chemical, and hook and ladder trucks. This building remained relatively unchanged until the early 1950s, when the City Hall, jail, and the fire department were moved to new quarters. In 1955 the newer one-story addition was built. At some point, either prior to or during this construction, the facade of the old city hall was demolished and rebuilt at a greater distance from the street.



Members of the Fire Department, 1913, standing near the Interurban Depot which was adjacent to the City Hall. Photo courtesy of Cheney Historical Museum.

(38) 214 "D" Street (1926)

This modest house of simple rectangular plan has never been altered, but cladding and window materials have been replaced or covered over. This house may have been constructed as a rental for college students and is currently in use as such.

(39) 217 "D" Street (1910)

This modest house has a large picture window to the right of the wood and glass front entry door. The only change to the simple rectangle and front porch plan was the addition of the enclosed back porch, which probably occurred shortly after 1939. Recently the house has been re-shingled and vertical metal siding applied over the original horizontal wood siding. As part of that work, an original brick chimney was removed, leaving one other chimney intact. This was the home of longtime Cheney plumber Elmer Davis.

(40) 220 "D" Street (1927)

This modest dwelling has not been modified since construction. It is typical of small rental houses in Cheney. In the years following the Korean War, owner Stan Chestnut rented out the basement for \$50 per month. The old wood and glass front entry door is sheltered by a small gabled canopy supported by decorative wood brackets. A full-height brick chimney is attached to the northwest side of the house. A small front-gabled garage, with swinging wood vehicle entry doors is located behind the house.



(41) 310 "D" Street (ca. 1920)

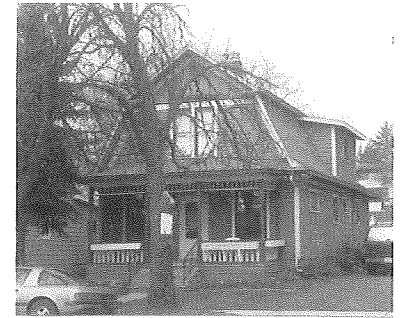
Shotgun houses such as this were a common sight in western working-class neighborhoods of the early 1900s. A narrow rectangular plan and simple room configuration are defining characteristics. The front facade is typical with the door on one side and a single window on the other. The full-width

(22) 604 Second Street (1889)

This wood frame building is a one-story house with a front gable and wing plan. The front porch is a more recent addition. Although this house has been extensively modified with cladding and additions, it retains its original gable and wing configuration.

(23) 608 Second Street - Brown House (1907)

This wood frame house sports a front-gabled gambrel roof, a roof style rare in Cheney. The front of the house features a nearly full-width porch with a hip-roofed canopy supported by turned wood posts. Directly below the canopy eaves is a wood spindle work frieze. There are multiple-pane casement windows, and a secondary entry, located on the northwest side, has a multiple-pane glass and wood door with multiple-pane side lights.



This building has been in continual use as a single-dwelling residence. Its simple plan, a rectangular structure with an open front porch has been retained, along with its architectural integrity. The only changes have been the addition of the shed-roofed dormer, the removal of a tall brick chimney in the rear, the replacement of the original latticework front porch skirting, and the removal of some cookie-cutter detailing below the spindle work of the porch. Early residents of this house were A. Brown and Mattie Brown, of the local Brown and Holter car dealership.

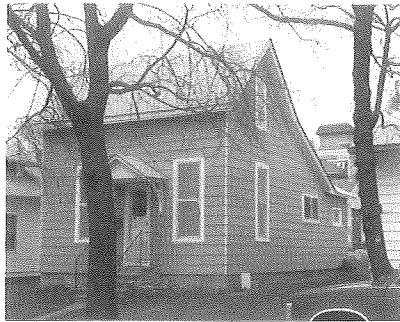
(24) 614 Second Street (1910)

This was the home of longtime Cheney residents Ted and Hannah Stahlborn. The widely overhanging eaves of the roof feature exposed rafter ends, as do similar eaves on the dormer roofs. A brick chimney is located to the back of the roof crest. A corner front porch is situated beneath the roof, which is supported at the corner by a square wood post. Windows are all original wood sash and include large picture windows, casement windows, and

double-hung windows. Behind this house is a small front-gabled garage (1915) clad with tongue-and-groove horizontal wood siding. This garage retains its original wood swinging vehicle entry doors.

(25) 616 Second Street (1880)

This saltbox style house is one of the oldest structures in Cheney. A small back porch was added to the structure in about 1897 and a full-width front porch, with hipped roof, square posts, and a turned wood balustrade, was added in about 1910. Between 1960 and 1963, owner Bob Falks moved the house over one lot and built a new home on the corner lot to the northeast. At that time it was lifted off the original basalt foundation, placed on a new concrete block foundation, and the front porch was removed.



(26) 413 Third Street (1903)

The original construction included a full-width open front porch. By 1939, the enclosed back porch had been added. Between then and 1960, the gable wing was added and the front porch removed, replaced with the current vestibule. Windows of the front facade are wood sash double-hung, covered with metal storm windows.

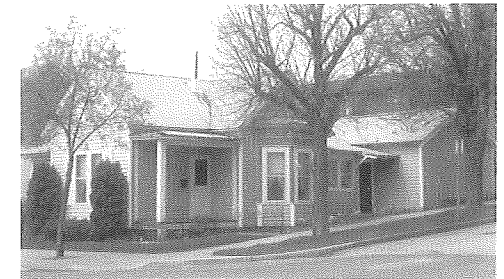
(27) 506 Third Street (1941)

This modest residence, probably built as a rental space for students of the nearby college, is believed to have been built by "Shoe" Roos, an employee at the flour mill. Interestingly, "Shoe" was the son of a local bakery owner. The unusual configuration of the foundation indicates that this house was built on the old stone foundation of a previously existing building which had stood since at least 1905. The 1939 Sanborn map shows a different structure on the site, indicating that the change probably occurred when the current house was built in 1941.

The church retains excellent architectural integrity, both in interior and exterior design, and was listed on the Cheney Register of Historic Places in 2001.

(36) 202 "D" Street – Kelly House (ca. 1890)

This building retains much of its original plan and most of the original wood sash windows, including both casement and double-hung. A number of additions have been made to the original cruciform plan, but most of these alterations occurred at an early date. Reportedly, the property was purchased by local minister Joshua Herron and his wife Amanda in 1880. Herron built several wood frame structures on the lot, including an office for the Northwest Tribune, an early Cheney newspaper. Between 1890, when the house was first built, and 1916, several porch-like additions were attached to the original structure. The attached garage had been built by 1939.



The house was purchased by local businessman and civic leader Ruby Kelly and his wife Agnes in 1917. The next year, Mr. Kelly shot and killed one of three men who attempted to rob him on the porch of this modest residence. The Kelleys lived here for 65 years. Recently the house was extensively remodeled, including the closure of the vehicle entry bay of the garage, which then became a part of the house interior.

(37) 213/215 "D" Street (1891)

This residence was a simple gable with wing dwelling, lacking the current porches and canted bay window. By 1897 the plan had been expanded to include the bay window, the front porch, and the rear gabled addition. By 1905 several small additions had been made to the rear of the house. This configuration was maintained until at least 1939. In recent years new cladding has been applied, a new addition and attached garage were added, a tall brick chimney was removed, and the front porch was rebuilt. This former single-dwelling residence is now a duplex.

1889, the congregation purchased the lots for \$125, and a small, white, wood-frame building was built. By 1911, the membership of the congregation had grown to several hundred, which prospered during the next few years. The old wood structure was sold and moved. The present building was begun in 1914 and completed in 1915.

The church was built by S. V. Mackey, a Cheney-area master builder/carpenter and reflects the American Craftsman movement. The Cheney Free Press in 1918 noted that Mr. Mackey supervised the construction with "a force of Cheney workmen," and reported the cost of construction to be \$12,000. The triangular knee braces used at the roof wall junctions, and wide eave overhangs and gabled roof are typical elements of Craftsman structures. The overall impression conveyed by the building is one of restraint. It is not highly decorated, and materials are used sparingly.

Filled with optimism, the church was built with a maximum seating capacity of 300 persons. It included a large dining room and kitchen in the basement. The Cheney Free Press described the new church as "a place of beauty conducive to reverent worship." In 1918, several war veterans who had been stricken by the deadly flu epidemic of 1918-1919 were housed in the basement of the building and successfully nursed back to health.

Construction caused the congregation to incur heavy debt. This, coupled with the Great Depression (1929), led to numerous difficulties which the church members and leaders had to overcome. At one point, membership of the congregation had fallen to only 48. Subsequently the church rebounded and experienced a revival of evangelistic ardor. The mortgage for the building was finally burned in 1943.

The windows are original to the building. Simple stained glass windows in a geometric craftsman-style predominate. A large memorial window located on the north end commemorates the Cook family. This is the only window which has pictorial representations. Windows on the east and west sides use simple geometric forms in a pale green color. Each bears an inscription from the Ladies' Aid Society, students of the Normal School, and Christian Women's Bible Mission.

(28) 522 Third Street (1917)

This bungalow-style house was built on a site that had been long occupied by a Baptist church. As early as 1908, that structure was described as "old." The church was demolished in about 1915. Most likely this house was originally built to house a single family, probably well-to-do economically. Like other large houses in this college community, however, this house was eventually divided into multiple-unit housing. By the 1930s, local farmers William and Laurina Clute retired from their 180-acre farm on the Badger Lake Road to this house. A subsequent owner, Cyrus Phillips, was known to rent rooms to college students.



Just south of the house is a poured concrete garage that has been excavated into the ground. The face of this garage is built of rusticated concrete blocks. The old wood swinging vehicle entry doors remain intact. This structure, as well as a concrete retaining wall around the front lawn, was probably built at the same time as the house.

(29) 413 Fourth Street (1910)

This single-family residence has remained unaltered except for asbestos siding and the removal of a covered wraparound porch, the stone foundation of which is visible. In contrast to many surrounding houses which have been converted to rental units, this is still an owner-occupied home.

(30) 422 Fourth Street (1895)

The foundation of the main house is unusual, consisting of basalt covered with a stucco-like layer of plaster which is etched with lines to appear like concrete blocks. Adjacent to the front bay window is the main gable wing of the house. This juxtaposition



creates an exterior niche, with double-hung windows practically looking into each other. On the other side of the gable wing is small gabled wall dormer piercing the eaves, with a double-hung window. Originally the building had a covered front porch of only one story. There were two small enclosed porches attached to the rear of the structure. In about 1915, a wide covered porch was added to the back. The upper level of the front porch was built after 1939. Except for changes to the rear, this house retains its basic shape. Although it was first constructed as a single-family residence, it has long been used as a multiple-unit rental, due to the increasing demand for off-campus student housing.

(31) 519 Fourth Street (ca. 1882)

The house displays a variety of window shapes, including double-hung, casement, and a diamond-shaped fixed sash window on the rear elevation. The front porch has round turned posts with decorative cookie-cutter brackets that support the canopy. The porch deck is bordered by a low open rail with turned wood balusters. The front entry door is an old wood and glass type with dentilated moldings around the panes of glass. On the northeast side, this house is connected to the adjacent residence by a side-gabled breezeway. The building has undergone surprisingly minimal modification over the years. In 1885 it was known as the "Court House," probably being called after the name of the owners at that time.

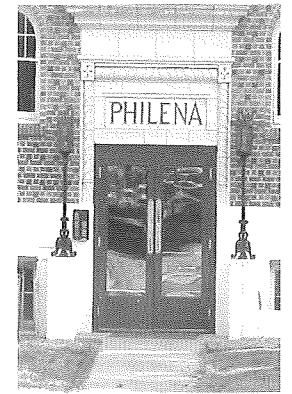
(32) 520 Fourth Street – Old High School, Fisher Building (1931)

This two-story brick school building was originally Cheney High School. It is an excellent example of institutional architecture employing elements of the Collegiate Gothic Style. Indicators of that style visible on the building include castellated parapets, pointed arches above the entry doors, brick pilaster wall buttresses, and decorative window tracery. The central terra cotta detail at the top features an open book and torch motif.

The massive terra cotta door surround at the entry features shield and ribbon designs in the upper panel, and a high recessed Tudor arch. The upper space within the arch is filled with windows framed with wood tracery that defines multiple pointed arches. Many historic elements of the interior remain, including terrazzo floors, hardwood plank floors, and plaster walls. It contains a theatre/auditorium and a central gymnasium with mezzanine at the second floor.

Above the entry doors is a terra cotta panel with the word "Philena" inscribed into it. The doors are flanked by concrete pedestals which support decorative wrought iron lamp posts.

The interior of the Philena Apartments includes a storefront area, individual apartments, hallways, office space, and a central foyer and stairway. Decor of the interior is low-key. Most of the hardwood plank floors are covered with carpeting, and painted wood wainscoting denotes the hallways. The central stairway foyer is lit by the exterior round-arched windows. Some interior foyer doors are of the multiple-pane French type. An old hexagonal wrought iron light fixture hangs from the highest point of the stairway foyer. The original room configuration of the Philena remains largely intact.



This building retains a remarkable degree of architectural integrity in both its interior and exterior appearance. It has continuously served as a multiple-unit residence since its construction, maintaining a close association with the nearby college. It is currently owned by a student fraternal organization.

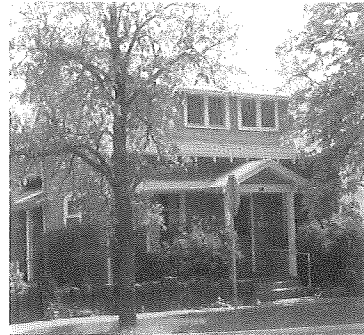
(35) 524 Fifth Street – Cheney Christian Church (1915)

The Cheney Christian Church traces its beginnings to the first congregation of the Disciples of Christ, or Church of Christ, to be established in Spokane County. The idea of creating the church was championed, in 1885, by Mrs. J.A.C. Merriman, a staff member at the recently founded Cheney Academy. As a result of her efforts, a missionary evangelist, A.W. Dean of Colfax, was sent to Cheney where the new church was formally chartered on March 28, 1886. Rev. Dean also served the surrounding communities of Tyler and Medical Lake. In



(33) 523 Fourth Street – Dr. Pomeroy House (ca. 1910)

Construction was reportedly financed by prominent Cheney business, professional, and civic leader Dr. F.A. Pomeroy, who was instrumental in the early development of Cheney. The original plan of the house has not been significantly changed since its construction. Although the side porch deck has been removed, the original canopy is still intact. This house retains excellent architectural integrity.



The old wood and glass entry door is flanked by the closed half-wall rails of the porch. On either side of the main entry are single wood sash double-hung picture windows. The upper sections are divided into decorative shapes by lead came, a slender grooved lead bar used to hold together the panes in stained glass or latticework windows. The upper level is a sleeping porch with multiple-pane wood sash casement windows. Below this is an enclosed front porch area with two rows of fixed wood sash windows. The southwest elevation has only a few windows and faces the adjacent house, to which it is connected by a gabled breezeway.

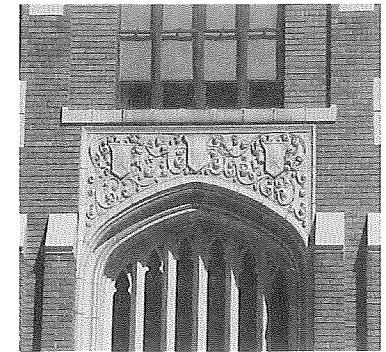
(34) 419 Fifth Street – Philena Apartments (1929)

This building is an excellent example of Romanesque architecture.

The Philena is one of the earliest apartment buildings to be built in Cheney and has been the home of numerous faculty members of the college. It was designed by Spokane architects Archibald Rigg and Roland Vantyne to provide a home for college faculty members. It was built by prominent local businessman and soon-to-be Washington State Governor Clarence D. Martin (son of F.M. Martin, banker and owner of the Martin Grain & Milling Company), who named the building for his mother, Philena.



The Cheney High School building was constructed on a site previously occupied by the Cheney Public School (originally completed in 1893). The older building was the site of college classes for three years after fire destroyed the Normal School. In 1896, the older building returned to its original purpose of educating all Cheney students. In about 1910, a new high school was built, temporarily alleviating crowding. The increasing population of school children outgrew these facilities, and in 1931 the old Public School building was demolished and the present structure was built.



Detail of entryway, Old High School Building.

The new High School building was designed by prominent Spokane architect George Rasque, who at the time was the favored builder of public structures in Washington State. When the high school was once again moved in 1967, this building became the Cheney Junior High School. At present it is used for administrative purposes (since 1974) as the Fisher Building, after long time Cheney High School principal George Fisher. Although additions have been attached which obscure some exterior surfaces, it retains excellent overall architectural integrity and remains a good example of institutional structures of the time.



Construction crew at the Cheney High School, 1914. Fritz Steiner is the tall man in a suit; S. H. Thorsnes, Carpenter Foreman. Photo courtesy of Cheney Historical Museum.

